

FRAME

Annual Report 2020



COVER IMAGE

Gerhard Richter, German, born 1932, *Betty*, 1988, oil on canvas, Saint Louis Art Museum, Funds given by Mr. and Mrs. R. Crosby Kemper Jr. through the Crosby Kemper Foundations, The Arthur and Helen Baer Charitable Foundation, Mr. and Mrs. Van-Lear Black III, Anabeth Calkins and John Weil, Mr. and Mrs. Gary Wolff, the Honorable and Mrs. Thomas F. Eagleton; Museum Purchase, Dr. and Mrs. Harold J. Joseph, and Mrs. Edward Mallinckrodt, by exchange 23:1992 © Gerhard Richter, 2021.

DIRECTORS' FOREWORD

We will remember 2020 as a year marked by the confluence of a global pandemic, economic turbulence, racial and social injustice issues, political upheaval in the United States and unimaginable change worldwide. All facets of our personal and professional lives were interrupted by physical distancing, lockdowns and the uncertainty of travel. FRAME made appropriate shifts in its priorities and adjusted its calendar multiple times throughout the year as we worked with our member museums and postponed and re-shaped our exhibitions, education programs, conferences and meetings.

The challenges of 2020 had a profound impact on our museums and their staffs. We all had to search for more creative ways by which we can work together and explore new means to support our members and help them further engage with the communities they serve. Shortly after the pandemic forced the shutdown of museums in mid-March, FRAME initiated its first-ever emergency grant program so members could embrace technologies and create online programs to reach, engage and educate their constituents as well as grow their audiences. After the horrific deaths of George Floyd and Breonna Taylor in the United States and their social impact in other countries – France included –, FRAME also supported its members with a series of roundtable discussions through the Summer and a hosted a virtual annual conference in the Fall on diversity, equity and inclusion (DEI) to help its members on both sides of the Atlantic confront the many racial and social issues that question our societies and the role of museums.

We believe art has the power to inspire, unite, and heal. A connection to the arts and culture has never been more important.

As we look ahead, museums and life as we once knew it will return to some sense of normalcy again, and the FRAME network will be stronger and more united than ever. Let us all learn from the challenges of 2020 and embrace the vitality gained from our many collaborations, the exploration of evolving technologies, our envisioning of new possibilities, and the welcoming of new partnerships as we look to the future of the FRAME network.

We are immensely grateful to the FRAME Board of Directors and to our many contributors for their ongoing support throughout this challenging year, which allowed us to sustain our mission and support our members. It is an honor to serve this exceptional network.

With hope and resolve,

Marguerite d'Aprile Quigley and Emilie Vanhaesebroucke
Executive Directors, FRAME

LEADERSHIP UPDATES

FRAME EXECUTIVE DIRECTOR IN NORTH AMERICA

Marguerite d'Aprile Quigley began her tenure as the Executive Director of FRAME North America, effective January 15, 2020. In this position, Ms. Quigley will advocate for and support participation of 16 North American art museums with their French counterparts in this distinguished international cultural collaborative. She succeeds Luisa Adrianzen Guyer who left FRAME in October 2019.

Ms. Quigley is an experienced executive with over 25 years of successful leadership in arts management, exhibition and program development, and communications within cultural organizations and higher education institutions. She served as the Director of Communications for the Lewis Center for the Arts at Princeton University through its initial period of rapid growth and as the Director of External Affairs for the New Jersey State Council on the Arts, where she worked with more than 400 arts organizations across the state. Prior to these positions, Quigley worked with internationally renowned curators and scholars in America, France, and Italy as a Senior Editor of the J. Paul Getty Art and Architecture Thesaurus, a seven-volume reference work published by Oxford University Press, and an embedded digital translator which facilitates the interchange of cultural information and programming of all types. Most recently, Quigley was the Founding Director of the Center for Arts Programming at Lyme Academy College of Fine Arts in Old Lyme, Connecticut, where she developed a robust series of exhibitions, lectures, art programs, workshops and cultural collaborations for the Connecticut Shoreline community.



Elisabeth Wilmers, FRAME Annual Conference, Montreal, 2013 © FRAME

Quigley works with William Beekman, Emilie Vanhaesebroucke and other members of FRAME's leadership team to sponsor and support new curatorial and educational programs among the international network of 32 North American and French museums.

BOARD OF DIRECTORS UPDATES

Nathalie Bondil resigned from the Board after leaving the Museum of Fine Arts in Montreal. The Board is grateful to Nathalie for her many exemplary contributions to the FRAME network during her 12 years of service. The Board elected Gary Tinterow, Director of the Museum of Fine Arts, Houston to replace her.

Michel de la Chenelière and Elisabeth Wilmers' terms on the Board ended on December 31, 2020. The Board expresses its deep appreciation for Michel and Elisabeth's leadership of FRAME, and in particular notes Elisabeth's long and generous service on the Board, along with her late husband, Robert Wilmers.

CHANGES IN MEMBERSHIP

William Beekman informed the Board that he received a letter from Charles Venable announcing that the Indianapolis Museum of Art/ Newfields would be resigning as a member of the FRAME network due to a change in its orientation as a community center. The Detroit Institute of Arts (DIA) also resigned from the FRAME network, effective December 31, 2020 due to a complicated financial situation.

FRAME BOARD OF DIRECTORS

(as of December 31, 2020)



Anne-Solène Rolland and William Beekman, Paris 2019 © Didier Plowly, Photographe.

OFFICERS

William B. Beekman, Co-President, North America
Anne-Solène Rolland, Co-President, France
Davin Staats, Treasurer
Zoe Kahr, Secretary
Marguerite d'Aprile Quigley, Executive Director, North America
Émilie Vanhaesebroucke, Executive Director, France
Susan Talbott, Expert Director, North America
Pierre Provoyeur, Expert Director, France

MUSEUM DIRECTORS

Aurélie Albajar, Head of the Education Department, Musée des Augustins de Toulouse
Sylvain Amic, Director and Chief Curator, Museums of Rouen
Bruno Girveau, Director and Conservateur général du patrimoine, Palais des Beaux-Arts de Lille
Christoph Heinrich, Director, Denver Art Museum
Gary Tinterow, Director, Museum of Fine Arts, Houston
Zoe Kahr, Deputy Director for Curatorial and Planning, Los Angeles County Museum of Art
Sophie Lévy, Director and Curator, Musée d'Arts de Nantes
Alex Nyerges, Director, Virginia Museum of Fine Arts, Richmond
Xavier Rey, Director and Curator, Museums of Marseille
Ronna Tulgan Ostheimer, Director of Education, Sterling and Francine Clark Art Institute, Williamstown

PHILANTHROPIC DIRECTORS

William B. Beekman
Hélène David-Weill
Constance Goodyear Baron
Alva Greenberg
Samuel Seymour
Davin Staats
Dorothy Stapleton
Mary Wolf
Gary Wolff

HONORARY DIRECTORS

Marie-Christine Labourdette
Philippe de Montebello
Pierre Rosenberg

CONTRIBUTIONS AND SUPPORT

We are deeply appreciative of the generous support from our Philanthropic Trustees and other friends of FRAME received in 2020.

William B. Beekman
Michel de la Chenelière
Hélène David-Weill
Constance Goodyear Baron
Alva Greenberg
Barbara Liberman
Samuel Seymour
Davin Staats
Dorothy Stapleton
Élisabeth Wilmers
Mary Wolf
Gary Wolff

Debevoise & Plimpton, LLP
The Samuel H. Kress Foundation
The Terra Foundation for American Art
Ministry of Culture, Direction générale des Patrimoines, Département de la politique des publics

LEADERSHIP MEETINGS

BOARD OF DIRECTORS – SPRING MEETING

The FRAME Board of Directors met on April 3 with 21 of its 24 members in attendance. What was originally scheduled to be an in-person meeting in New York was reshaped as a videoconference due to the pandemic. The main item of discussion was FRAME's response to COVID-19. The Board agreed to update the Project Support Guidelines with a new grant cycle to expand audience development by providing emergency support to museums for online programs so they could engage their constituents remotely while their doors were closed to the public. The Board recommended a Special Review Committee to work with Marguerite d'Aprile Quigley and Emilie Vanhaesebroucke to receive and quickly respond to new grant proposals. Nathalie Bondil, Ronna Tulgan Ostheimer, Debbie Stapleton, and Sophie Lévy offered to serve on the committee, and Susan Talbott agreed to be the chair.

The Board reviewed the finances and awarded grants to the Cleveland Museum of Art and to the Musée des Beaux-Arts de Rennes. They agreed to use the remaining funds in the project support budget for new applications for emergency support. The Board also decided to

cancel the Spring Planning Meeting in Giverny and apply the funds budgeted for the Giverny meeting to project support. They tabled the decision about whether or not to host the Annual Conference in Marseille and agreed to make a determination by June 15. The Board also approved the expansion of FRAME but agreed to table this discussion until after the COVID-19 crisis.

BOARD OF DIRECTORS – FALL MEETING

The FRAME Board of Directors met by videoconference on October 30 with 19 of its 24 members in attendance. The Board acknowledged with regrets the departure of Nathalie Bondil, who resigned after leaving the Montreal Museum of Fine Arts, and recognized Michel de la Chenelière and Elisabeth Wilmers whose terms on the Board ended on December 31, 2020. The Board held its annual elections and officially elected Marguerite d'Aprile Quigley as FRAME Expert Director and Gary Tinterow, FRAME Museum Director to replace Nathalie Bondil. The Board also re-elected the Directors whose terms expired in 2020 for another three-year term, which include Aurélie Albajar (FRAME Museum Director), Alex Nyerges (FRAME Museum Director), Pierre Provoyeur (FRAME Expert Director), Dorothy Stapleton (Philanthropic Director), Ronna Tulgan Ostheimer (FRAME Museum Director) and Mary Wolf (Philanthropic Director).



Pierre Bonnard (French, 1867–1947), *Family Scene*, 1893, published in *L'Estampe Originale*. Color lithograph. Sheet: 58 x 41.5 cm; 22 13/16 x 16 5/16 in.) image: 31.3 x 17.8 cm (12 5/16 x 7 in.). © Artists Rights Society (ARS), New York. Cleveland Museum of Art. Nancy F. and Joseph P. Keithley Collection Gift 2020.150

The meeting then focused on the discussion of diversity, equity and inclusion (DEI). Susan Talbott and Pierre Provoyeur reported on the panel discussion held during the Virtual Fall Conference on DEI, after which the Board agreed to make DEI a priority for FRAME. They recommended that a Task Force be formed to develop the guidelines for what FRAME should do to help its membership address DEI issues. The Board also reviewed the finances and awarded a grant to the Museum d'Histoire and the Musée Alsacien in Strasbourg and the Musée d'Aquitaine in Bordeaux for the continuation of the virtual exhibition, *Ports of Exile, Home Harbors*. The Board also reviewed the proposed budget for 2021 which was tabled until more information about grants and fundraising could be supplied.

MEETINGS AND CONFERENCES

NORTH AMERICAN DIRECTORS MEETING - ATLANTA

FRAME hosted a Breakfast Meeting during the Association of Art Museum Directors (AAMD) conference in Atlanta on January 27, 2020. Fifteen of the sixteen North American Directors attended. The main topic of discussion was enlarging the FRAME network.

FRENCH MUSEUM DIRECTORS MEETING – PARIS

Due to the pandemic, the French Museum Directors were unable to meet in 2020.

SPRING PLANNING MEETING

Due to the pandemic, the FRAME Board of Directors canceled the annual Giverny meeting in the Spring 2020. The Board acknowledged its gratitude to our hosts at the Terra Foundation for American Art who have welcomed FRAME back to Giverny in May 2021.

ANNUAL FALL CONFERENCE

The Board of Directors also canceled the FRAME Annual Conference in Marseille, due to the uncertainty of international travel. In place of the Marseille conference, FRAME convened its first ever virtual conference.



Dr. Lowery Stokes Sims. Photo by Nita Lee Roberts



Jean-François Chougnet. Photo by Agnès Mellon. Courtesy MUCEM

VIRTUAL FALL CONFERENCE

The 2020 Virtual Fall Conference was held on September 30 – Thursday, October 1, webcast live each day with simultaneous translation in both English and French. All members of the FRAME network were encouraged to attend.

The theme of the conference was “Diversity, Equity, and Inclusion in North American and French Museums.” The virtual conference opened with two keynote addresses by Dr. Lowery Stokes Sims, independent curator and ArtTable Board member, who discussed DEI in North American museums, and by Jean François Chougnnet, President of the Mucem in Marseille, who spoke about the situation in France. The second day, the two Expert Directors of FRAME, Susan Talbott and Pierre Provoyeur, moderated a roundtable panel discussion on DEI with seven members from the FRAME network that included:

- **Gary Tinterow**, Director, Museum of Fine Arts, Houston
- **Valerie Cassel Oliver**, Sydney and Frances Lewis Modern and Contemporary Art, Virginia Museum of Fine Arts, Richmond.
- **Diva Zumaya**, Assistant Curator of European Paintings and Sculpture, Los Angeles County Museum of Art (LACMA)
- **Moridja Kitenge Banza**, Artist and Educational Program Officer for World Cultures and Togetherness, Montréal Museum of Fine Arts
- **Laurent Védrine**, Director and Curator in Chief, Musée d'Aquitaine, Bordeaux
- **Sophie Onimus-Carrias**, Curator in Chief in charge of the Educational Department, Musée des Beaux-Arts de Lyon
- **Mathilde Schneider**, Curator and Director of the Museum of Antiquities and of the Museum of Natural History, Pôle Beauvoisine, Rouen



Édouard Vuillard (French, 1868–1940) *Luncheon (Annette and Her Grandmother)*, 1899. Oil on board. 45.7 x 61 cm (18 x 24 in). © Artists Rights Society (ARS), New York. Cleveland Museum of Art. Nancy F. and Joseph P. Keithley Collection Gift 2020.118.

More than 110 FRAME members and guests attended the two-day conference. Following the positive outcomes of the FRAME Virtual Fall Conference, the FRAME Board of Directors decided to make DEI a priority for FRAME in 2021.

EDUCATORS MEETING

The FRAME Educators Meeting, originally scheduled for October 27–28, 2020, was postponed due to the impact of the pandemic and the uncertainty of international travel. We are most grateful to our colleagues at the Wadsworth Atheneum Museum of Art in Hartford, Connecticut, who graciously offered to host the 2020 meeting, and to the Samuel H. Kress Foundation for their support, which will would have enabled FRAME to hold the Educators Meeting in North America for the first time since 2008.

SUMMARY OF GRANTS

PROJECT SUPPORT – SPRING 2020

The FRAME Board of Directors at its April 3 virtual meeting awarded project support grants to the Cleveland Museum of Art (CMA) and to the Musée des Beaux Arts de Rennes (MBAR). The grant to Cleveland will support the exhibition catalogue *"Private Lives: Home and Family in the Art of the Nabis, Paris, 1889-1900"*, co-written by Dr. Heather Lemonedes Brown, CMA Deputy Director and Chief Curator, and Dr. Mary Weaver Chapin, Curator of Prints and Drawings at the Portland Art Museum. The catalogue will accompany the exhibition scheduled to debut in Cleveland in the summer of 2021 and travel to the Portland Art Museum in the fall of 2021.

The grant to the Musée des Beaux-Arts de Rennes was intended to support travel and research on the early stages of Atelier 17 in Paris during the late 1920's, and in New York during the 1940's, by its leader, Stanley William Hayter, and the transatlantic links between the divergent generations of European and American artists. The MBAR staff is developing an exhibition on *"Hayter's Atelier 17: Towards a Free Print,"* scheduled to be on view in Rennes from February to April 2021 on the occasion of an "American Season in France," organized together with the Musée d'Arts de Nantes, the Musée Fabre de Montpellier and the Musées de Marseille. Because of the ongoing pandemic, travel plans were cancelled but a FRAME grant will support a symposium reuniting these museums about artistic relationships between France and America between 1918 to 1964.



Stanley William Hayter with Helen Phillips in 1948 in their New-Yorker Studio, 737 Washington Street. All rights reserved.

EMERGENCY SUPPORT GRANTS – SPRING 2020

At its April 3 meeting, the FRAME Board of Directors unanimously agreed to add a new grant cycle to quickly provide emergency support to our museums. In a mere three-week period, FRAME instituted a new grant cycle, reviewed applications and awarded six emergency grants for online projects that involved 17 museums in the FRAME network. These innovative online projects helped our member museums engage and build their audiences online, especially while their doors were closed to the public. This is the list of grants awarded:

- **Albright-Knox Art Gallery, Buffalo.** Two Projects: Virtual Art Alive-Tableaux vivants virtuels; and Digital Presentations of Op'Art in the Albright-Knox and Nantes collections. FRAME partner museum: Musée d'Arts de Nantes. Virtual Art Alive: Each year, the Albright-Knox invites students, community groups, organizations, households, and individuals to create live re-creations of works of art for prizes. Normally this annual contest is held outside. Due to social distancing, this year the event was held online. Participants created their stunning replicas—often called tableaux—using people, props, and their creativity. **Between the Lines: Highlighting Op Art in France and the United States:** The curators of Modern Art from the two institutions present their Op'Art collections and their connections.



A re-creation of Thomas Le Clear's *Buffalo Newsboy*, 1853 (Collection Albright-Knox Art Gallery).



Thomas Le Clear, *Buffalo Newsboy*, 1853. Oil on canvas. Albright-Knox Art Gallery, Charlotte A. Watson Fund.



Virtual tour (video) of the decorations painted by Hippolyte Flandrin for the Church of Saint-Germain des Prés, Paris.

- **Lyon Museum of Fine Arts.** Virtual tour of Hippolyte Flandrin's paintings for the Church of Saint-Germain des Prés, Paris based on sketches preserved within the FRAME network collections. FRAME partner museums: Cleveland Museum of Art; Los Angeles County Museum of Art; Palais

Beaux-Arts de Lille; Musée Fabre de Montpellier; Petit Palais, Musée des Beaux-Arts de la Ville de Paris; Musées de la Métropole de Rouen Normandie. Thanks to a complete digitalization of one of the major French decorations of the 19th century, a 3D digital replica was created. The short video offers a virtual tour, which is accompanied with interpretive tools to enrich the understanding and the knowledge of the decorations of Saint-Germain-des-Prés.

- **Montreal Museum of Fine Arts.** In support of *Our Natural World – A Virtual Sensory Based Experience*, aimed at connecting all publics, including neurodiverse audiences. FRAME partner museums: Dallas Museum of Art; Palais Beaux-Arts de Lille. The three museums explored the theme of the natural world through their collections to show what nature can reveal within each of us. They highlighted their shared expertise to create diverse programming grounded in art therapy and well-being.
- **Portland Art Museum.** A series of “Behind the Scenes” podcasts of dialogues between museums professionals including curators, educators, registrars and other staff. FRAME partners: Cleveland Museum of Art; Denver Art Museum; LACMA; and Petit Palais, Paris Museum of Fine Arts.
- **Rouen Metropolis Museums;** Museums of Marseille and the Montreal Museum of Fine Arts. In support of *Ports of Exile, Home Harbours*, an online exhibition conceived to highlight the individual and collective fates of the Jewish population during the Second World War on both sides of the Atlantic. The virtual exhibition includes public documents, photographs, and objects, most of which had never exhibited before, that follow the fate of Jewish citizens who were forced from their homes and persecuted, deported, murdered, or rescued. FRAME partner museums: Fabrique des Savoirs in Elbeuf- a Rouen Metropolis Museum; the Musée d'Histoire de Marseille-Mémorial des Déportations, Marseille; the Montreal Museum of Fine Arts as well as the Montreal Holocaust Museum.
- **Wadsworth Atheneum Museum of Art, Hartford.** Two Projects: The first virtually reunited the paintings of Adam and Eve by the 17th century Dutch painter, Hendrick Goltzius; and the second project was a special look at two “Cabinets of Curiosities,” a historical *Kunstkammer* in Rennes and a modern version in Hartford. FRAME partner museums: Museums of Strasbourg and Rennes Museum of Fine Arts.



Digitally reuniting Hendrick Goltzius's paintings of Adam and Eve. Original paintings are in the collections of the Wadsworth Atheneum, Hartford, Connecticut and in the Musée des Beaux-Arts in Strasbourg, France, respectively.

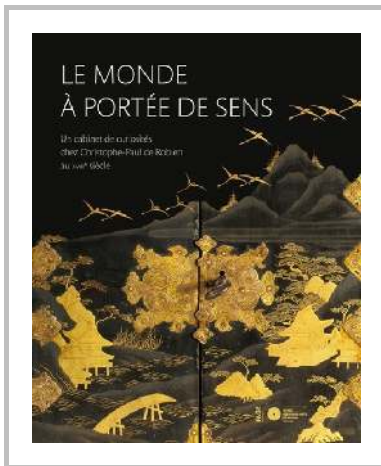


Evacuation of Jewish objects in 1939, Gift Maréchal de Lattre, Historical Museum – Photo credit: Museums of Strasbourg, M. Bertola.

PROJECT SUPPORT - FALL 2020

At the October 30 Board Meeting, FRAME awarded a project support grant to the Historical Museum and the Alsatian Museum of Strasbourg, and to the Aquitaine Museum and the Jean-Moulin National Center of Bordeaux who plan to add their collections and histories to the *Ports of Exile, Home Harbours* online exhibition. The genesis for this project began in April 2020 with a FRAME Emergency Support Grant.

PUBLICATIONS



The Musée des Beaux-Arts in Rennes published *Le Monde à portée de sens: A cabinet of curiosities at Christophe-Paul de Robien's in the 18th century*, under the editorial management of François Coulon, curator of the collections of archaeological and non-European objects. This first volume of a major undertaking, which will include several other volumes, presents the non-Western collections of the cabinet of natural history and curiosities set up in Enlightenment Europe by Christophe-Paul de Robien (1698–1756), President at the parliament of Brittany.

François Coulon, editor, *Making Sense of the World: The Eighteenth-Century Cabinet of Curiosities of Christophe-Paul de Robien*, Musée des Beaux-Arts de Rennes, 2020, Fage Editions

COMMUNICATION AND STEWARDSHIP

Throughout the challenging year, both Executive Directors of FRAME maintained sustained relationships through ongoing contact with the Board and the membership. With the onset of the pandemic in March, the Executive Directors sent weekly communications by email and e-newsletters to keep members informed of how FRAME was responding to the needs of its members and shared information about the many innovative ways museums engaged with their constituents through online projects. The co-Executive Directors also revised the Project Support Guidelines to expand audience development and implementing the FRAME Emergency Support grants in May during a three-week period. They were also involved in the preparation of Board meetings, the planning of two roundtable discussions on DEI, and organizing multiple Zoom meetings and webinars about DEI as well as the planning and execution of FRAME's first virtual Fall Conference. Throughout the year, they also maintained the FRAME financial records and oversaw the distribution of grant awards.

FRAME North American Office

As the incoming Executive Director of FRAME in North America, Marguerite d'Aprile Quigley began her tenure by relocating the FRAME office from Portland, Oregon to Essex, Connecticut. She planned and co-chaired the FRAME breakfast meeting at the Association of Art Museum Directors in Atlanta in late January with Susan Talbott, FRAME Expert Director, where she was introduced to 15 of the 16 FRAME North American Directors. Marguerite joined William Beekman, Davin Staats and Susan Talbott at the memorial for Felix Rohatyn in New York on February 3, where she met members of the Rohatyn family. Marguerite worked with William Beekman and planned the logistics for the Spring Board meeting on April 3, which was originally planned to be in New York but then had to be reshaped as a virtual meeting due to the pandemic. Marguerite also organized the virtual Fall Board Meeting (October 30). Along with Emilie, Marguerite reshaped the FRAME Annual Conference into a two-day Virtual Fall Conference. She also hosted several virtual meetings with Ronna Tulgan Ostheimer (The Clark Art Institute, Williamstown) and Anne Butler Rice (Wadsworth Atheneum Museum of Art, Hartford) the FRAME Education advisors in North America throughout the year to plan the FRAME Educators meeting, which had been scheduled to be held in North America for the first time since 2008. The conference was postponed two times due to the pandemic and subsequently has been rescheduled for October 2021. Marguerite also engaged a new web development firm for the FRAME website, which dramatically lowered our hosting fees. She was the project manager for the redesign of the FRAME website, which launched in May, and now features the work of the membership including the online programs. The redesign was also a cost-saving effort as the simplification of the new WordPress website allows the FRAME staff to make updates in-house.

FRAME French Office

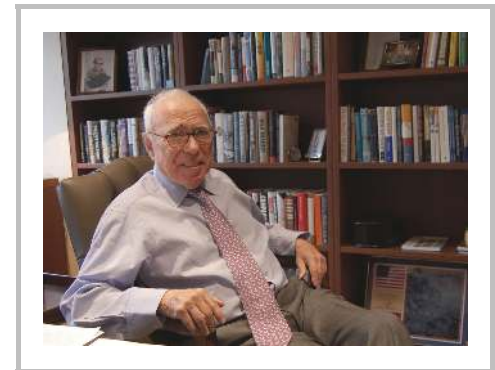
As Executive Director for FRAME France, Emilie Vanhaesebroucke administered the French office and oversaw the management of the Association FRAME Développement, which is the fundraising organization that supports FRAME in France. She organized a FRAME Education Virtual Meeting on May 15 about best practices for the reopening of French museums after the lockdown. Emilie also drafted the proposal for developing a members' directory on the private side of the new FRAME website. She organized the logistics for the Giverny Planning Meeting before it was canceled due to the pandemic and postponed and rescheduled several events including the FRAME Education Tour – *Please Touch* – in France to 2022-2023 (Rouen, Lille, Nantes, Bordeaux). After planning the logistics and establishing contacts for the FRAME Annual Conference in Marseille – which was initially

planned from September 30 to October 2, 2020–, Emilie had to change the plans and to reschedule the event to September 22–24, 2021. Emilie was in regular contact with Aurélie Albajar (Musée des Augustins, Toulouse) and Juliette Barthélémy (Palais des Beaux-Arts, Lille), the FRAME Education advisors in France, about diverse aspects of educational exchanges, programming and supports in 2020 and 2021. Emilie also maintained and/or developed contacts with cultural institutions including the French Cultural Services in the U.S.A. (New York City); the American Cultural Services in France (Paris); the Ministry of Culture (Paris), the Fondation pour la Mémoire de l'Esclavage (Paris); the TERRA Foundation Europe (Paris); and the Louvre. She also ensured the accurate translations from French to English and from English to French for all correspondence.

IN MEMORIAM

Felix G. Rohatyn

William Beekman, Marguerite d'Aprile Quigley, Davin Staats and Susan Talbott attended the February 3 memorial service for Felix G. Rohatyn, a prominent figure in the world of finance and a former U.S. ambassador to France, who passed away on Saturday December 14, 2019 at his New York home, at the age of 91. Felix had promoted the creation of FRAME and supported this initiative with his wife, Elizabeth F. Rohatyn (1930–2016), Co-Founder of the network in 1999. The entire FRAME network expresses its most sincere condolences to Felix Rohatyn's family and friends.



Felix G. Rohatyn in his office © Lazard.

Dr. Richard R. Brettell

FRAME also mourned the passing of its Founding Executive Director Dr. Richard R. Brettell, 71, (1999–2009), who died on Friday, July 24, 2020. Elizabeth Rohatyn, American Co-Founder and Co-President of FRAME (1999–2013) appointed Dr. Brettell in 1999 to lead the American side of the network and to help her develop a vision for the transatlantic organization, which he did for its first 10 years. During that time, Richard Brettell also forged a deep and lasting friendship with both Elizabeth and Felix Rohatyn. FRAME extends its sincerest condolences to Dr. Brettell's wife Caroline, and to the many loved ones whose lives were touched by him, including Pierrette Lacour, the faithful assistant to Dr. Brettell who coordinated the FRAME network during his tenure.



Elizabeth Rohatyn and Richard Brettell, Saint Louis, 2010 © FRAME



Centre de la Vieille Charité, Marseille © Adobe stock

LOOKING AHEAD – IMPORTANT DATES*

- **May 2021** Webinar – “Diversity, Equity and Inclusion in French and North American Museums”; this event replaces the Spring Planning Meeting in Giverny
- **July 1, 2021** – Deadline for submitting Letters of Intent for the Fall grant cycle
- **September 1, 2021** – Deadline for submitting applications for the Fall grant cycle
- **September 22–24, 2021** FRAME Annual Conference, currently scheduled for the museums in Marseille, France
- **October 2021** – FRAME Educators Meeting, currently scheduled for Wadsworth Atheneum Museum of Art, Hartford, Connecticut
- **December 15, 2021** – Deadline for Letters of Intent for the Spring 2022 grant cycle

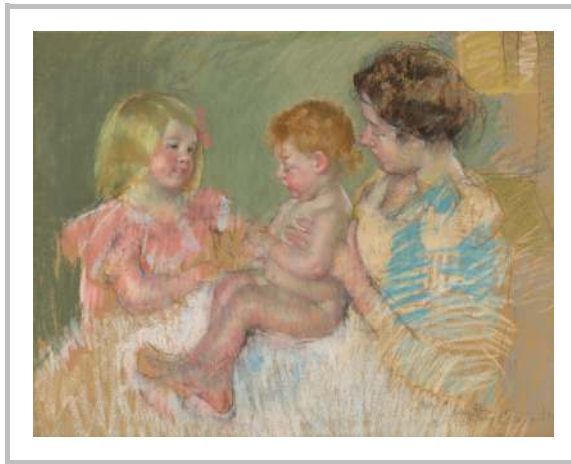
UPCOMING EVENTS*

- **February 12 to May 23, 2021** – Musée des Beaux-Arts de Rennes: *Stanley William Hayter and the World in an Atelier: Converging Stories of Surrealism and Abstraction* (takes part in a FRAME American Season in France).
- **February 12 to May 24, 2021** – Musée d’arts de Nantes: *United States of Abstraction. American Artists in France, 1946–1964* (takes part in a FRAME American Season in France).
- **March 27 to June 27, 2021** – Musée des Beaux-Arts de Lyon: *Hippolyte, Paul, Auguste: The Flandrin, Artists and Brothers*.
- **May 11 (opening) to September 27, 2021** – Musées de Marseille, Centre de la Vieille Charité: *Surrealism in American Art* (takes part in a FRAME American Season in France).



Robert Breer, *Untitled*, 1954, oil on canvas, 96 x 161 cm Paris, Centre Pompidou – Musée national d’art moderne – Centre de création, industrielle © Robert Breer, photo: © Centre Pompidou, MNAM-CCI, Dist. RMN – Grand Palais / George Meguerditchian

- **May 21, 2021** – Institut National d’Histoire de l’Art (INHA), Paris: *Artistic relationships between France and the United States (1918–1964): New Historiographical Redirections* (The Musée des Beaux-Arts de Rennes, the Musée d’arts de Nantes, the Musée Fabre de Montpellier and the Musées de Marseille taking part in the FRAME American Season in France)
- **July 1 to September 19, 2021** – Cleveland Museum of Art: *Private Lives: Home and Family in the Art of the Nabis, Paris, 1889–1900*.
- **July 3 to October 17, 2021** – Musée Fabre de Montpellier: *United States of Abstraction. American Artists in France, 1946–1964* (takes part in a FRAME American Season in France).
- **October 23, 2021 to January 23, 2022** – Portland Art Museum: *Private Lives: Home and Family in the Art of the Nabis, Paris, 1889–1900*.
- **November 14, 2021 to February 13, 2022** – Denver Art Museum: *Whistler to Cassatt: American Painters in France*.



Mary Cassatt, *Sara and Her Mother with the Baby (No. 3)*, 1901. Pastel on paper; 28-3/8 x 36-1/4 in (72 x 92 cm). Denver Art Museum. Gift by Drs. Tobia and Morton Mower.

*Dates subject to change depending on circumstances related to the ongoing pandemic.

MISSION STATEMENT

French American Museum Exchange (FRAME) is a consortium of 32 major museums in France and North America that promotes cultural exchange in the context of museum collaborations. FRAME fosters partnerships among its member museums to develop innovative exhibitions, educational and public programs, and professional exchanges among museum staff, and maintains a website to reach global audiences.



FRAME North America
P.O. Box 5
Essex, CT 06426
1.860.581.8609

FRAME France
6, rue des Pyramides
75001 Paris – France
+33 (0)1 40 15 35 67