

# Reinstallation of the European Art Galleries at the Dallas Museum of Art

Dr. Nicole Myers

The Barbara Thomas Lemmon Senior Curator of European Art



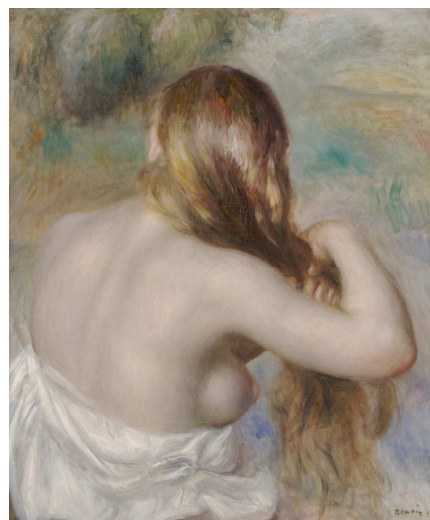
Edgar Degas, French, 1834–1917  
*Dancer with a Fan*, c. 1879. Pastel on  
paper



Edgar Degas, French, 1834–1917  
*Jockeys*, 1888. Pastel and graphite on paper



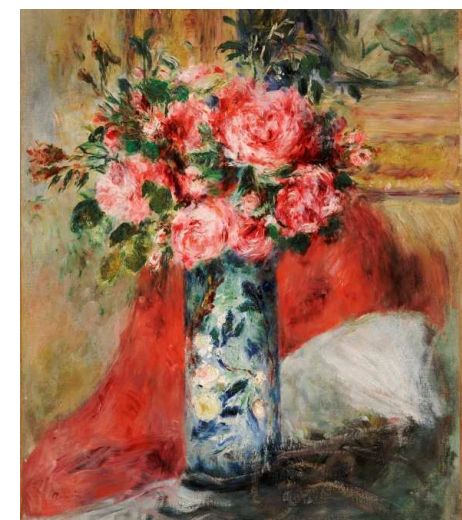
Pierre-Auguste Renoir, French, 1841–1919  
*Study of Nudes*, c. 1886–87. Red and white chalk on paper



Pierre-Auguste Renoir, French, 1841–1919  
*Blonde Braiding Her Hair*, 1886. Oil on canvas



Pierre Auguste Renoir, French, 1841-1919  
*Bust of Venus Victrix*, Modeled 1915, cast after 1917, Bronze



Pierre Auguste Renoir, French, 1841-1919  
*Roses and Peonies in a Vase*, 1876  
 Oil on canvas



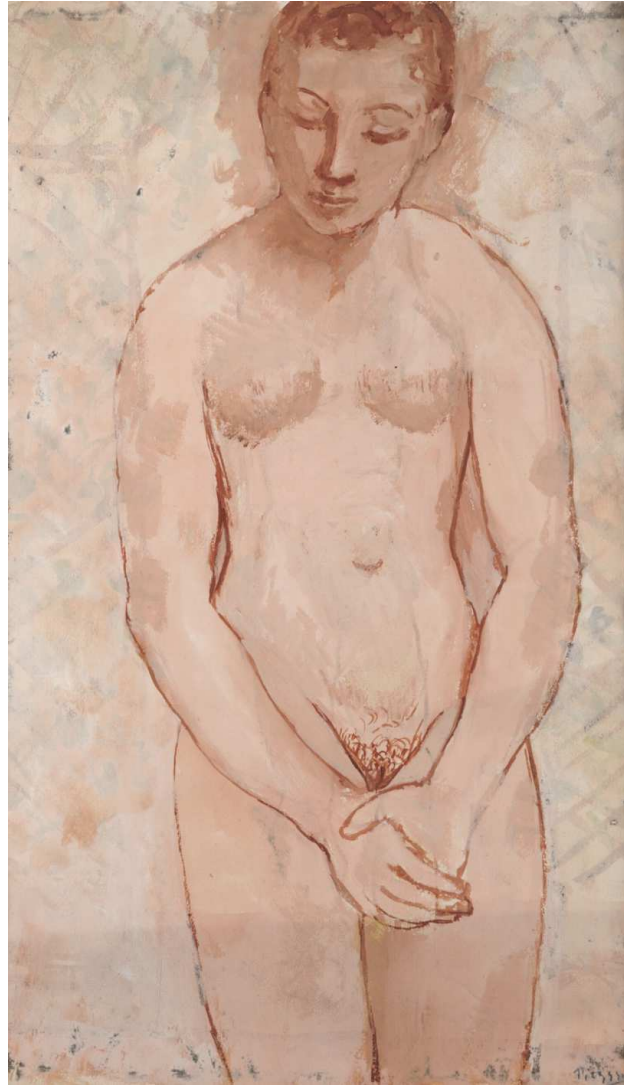
Claude Monet, French, 1840–1926  
*Still Life, Tea Service*, 1872. Oil on  
 canvas



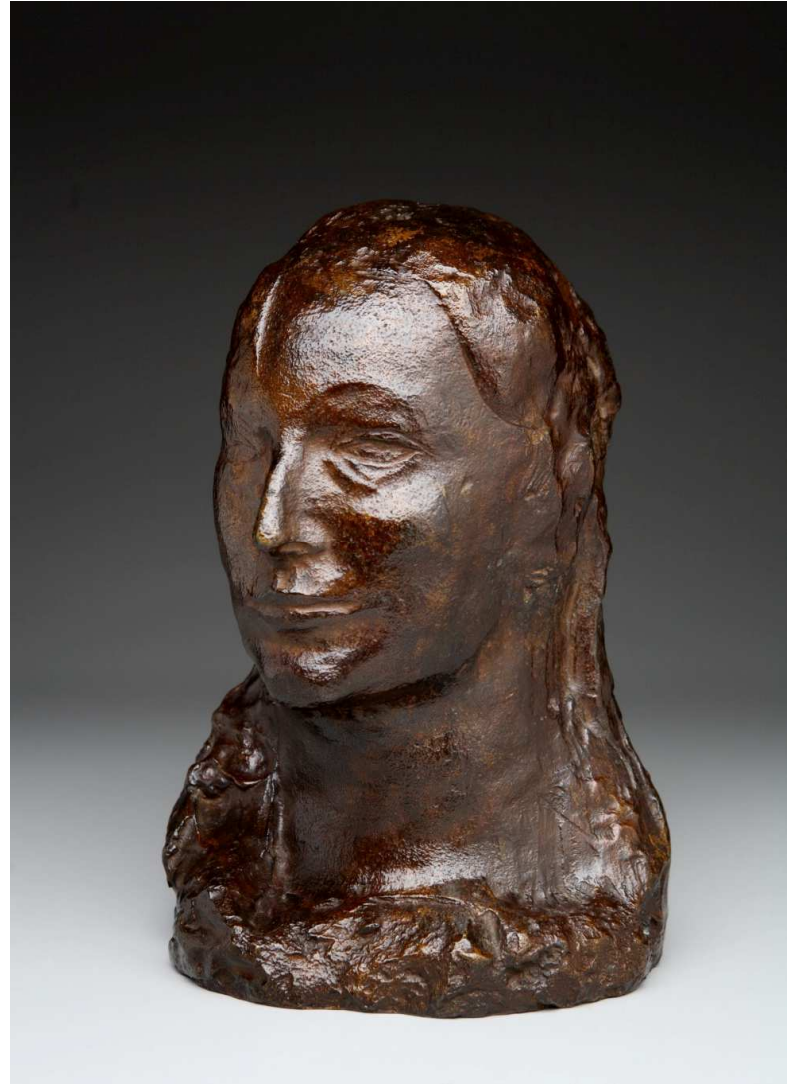
Claude Monet, French, 1840–  
 1926  
*Poplars, Pink Effect*, 1891. Oil  
 on canvas



Claude Monet, French, 1840–1926  
*The Water Lily Pond (Clouds)*, 1903. Oil on  
 canvas



Pablo Picasso, Spanish, 1881–1973  
*Nude with Folded Hands*, 1906.  
Gouache on paper



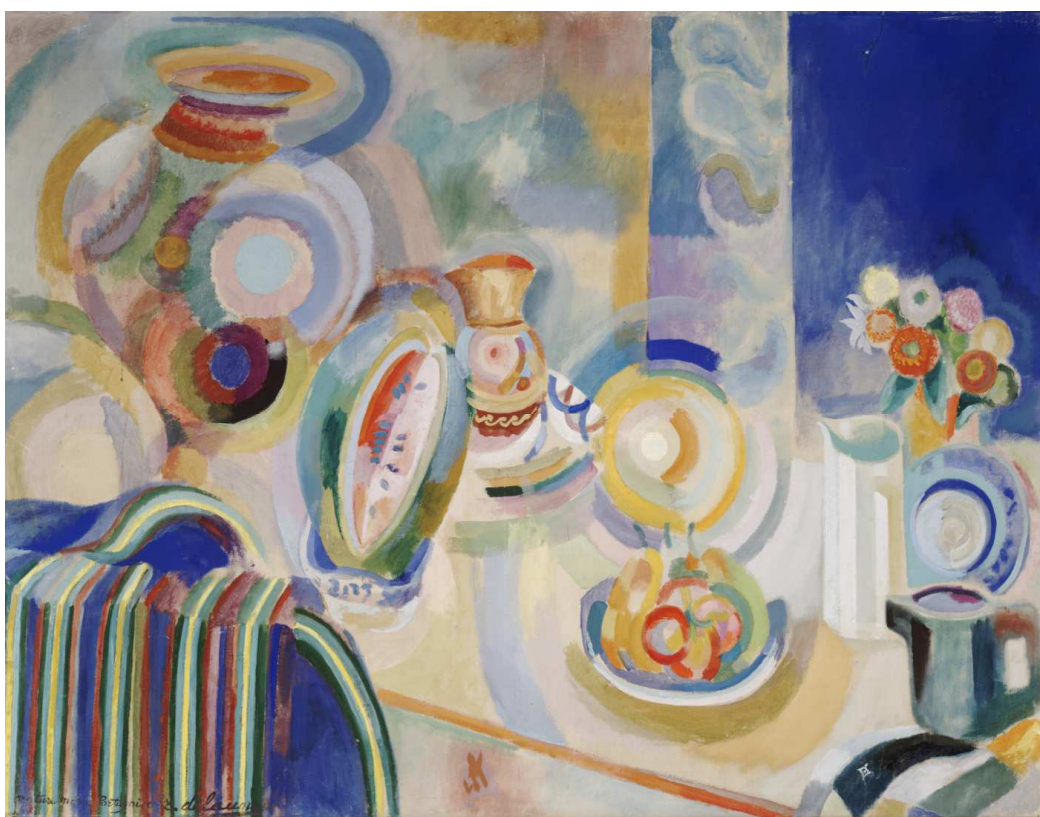
Pablo Picasso, Spanish, 1881–1973  
*Head of a Woman (Fernande)*, modeled 1905–1906,  
cast 1960. Bronze



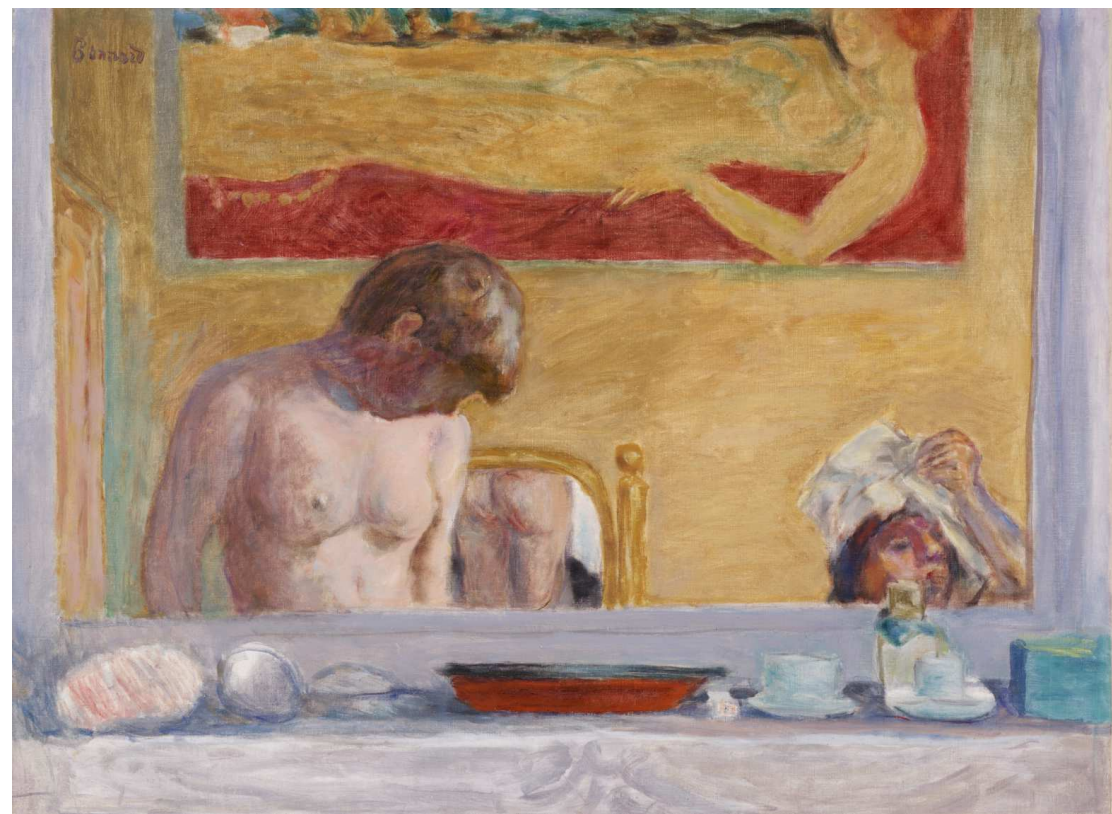
Edvard Munch, Norwegian, 1863–1944  
*Thuringian Forest*, 1904. Oil on canvas



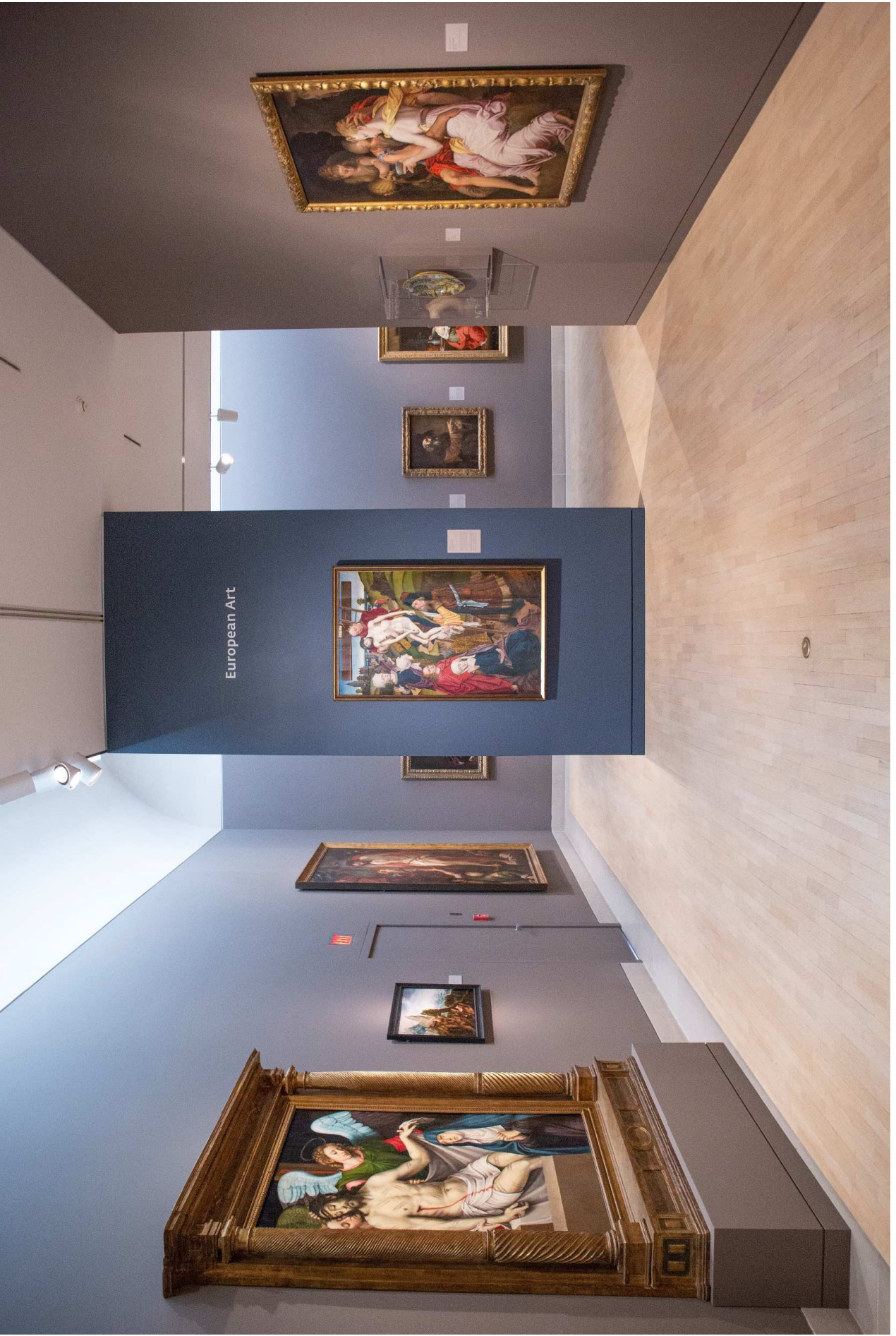
André Derain, French, 1880–1954  
*Fishing Boats at L'Estaque*, 1906. Oil on canvas

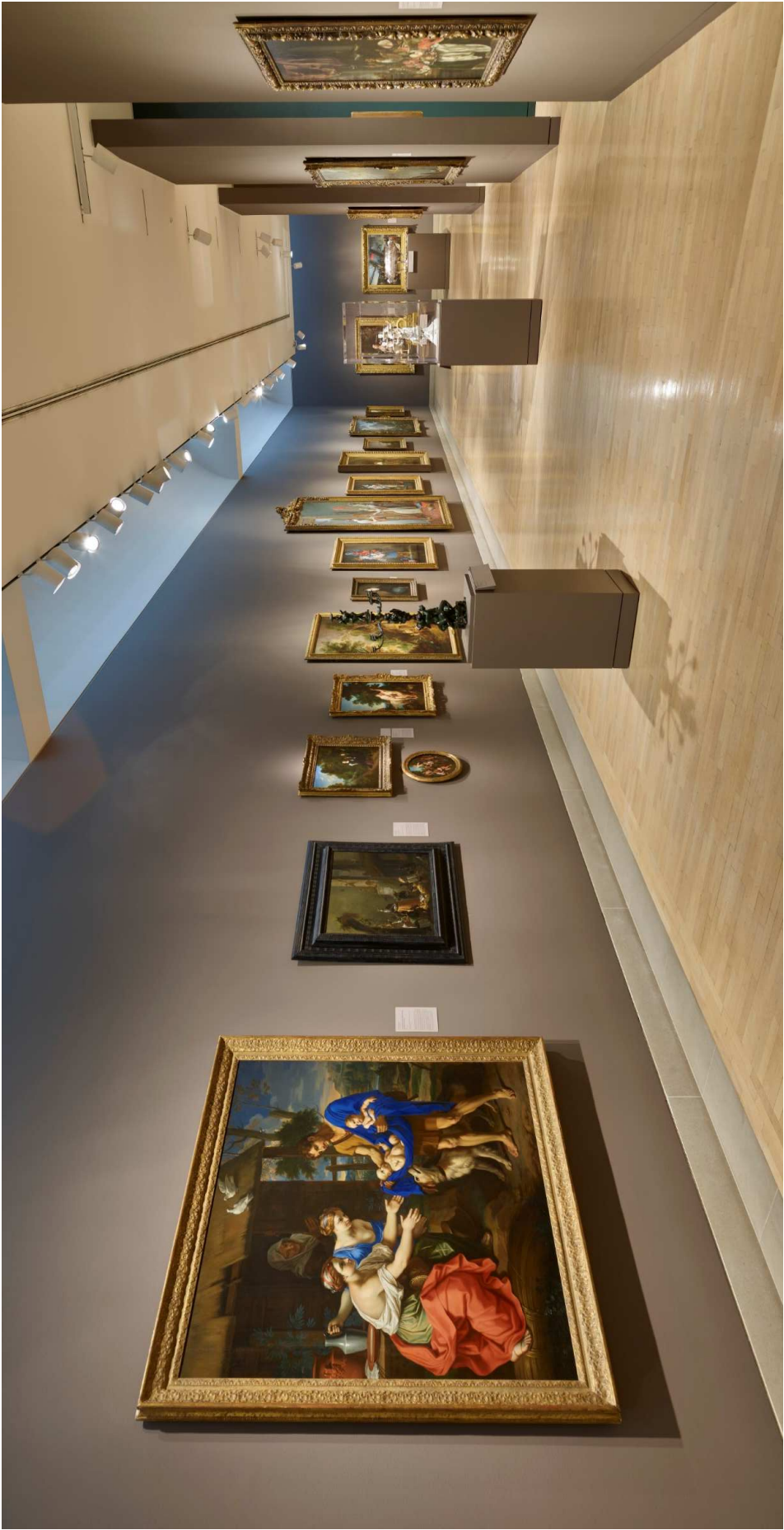


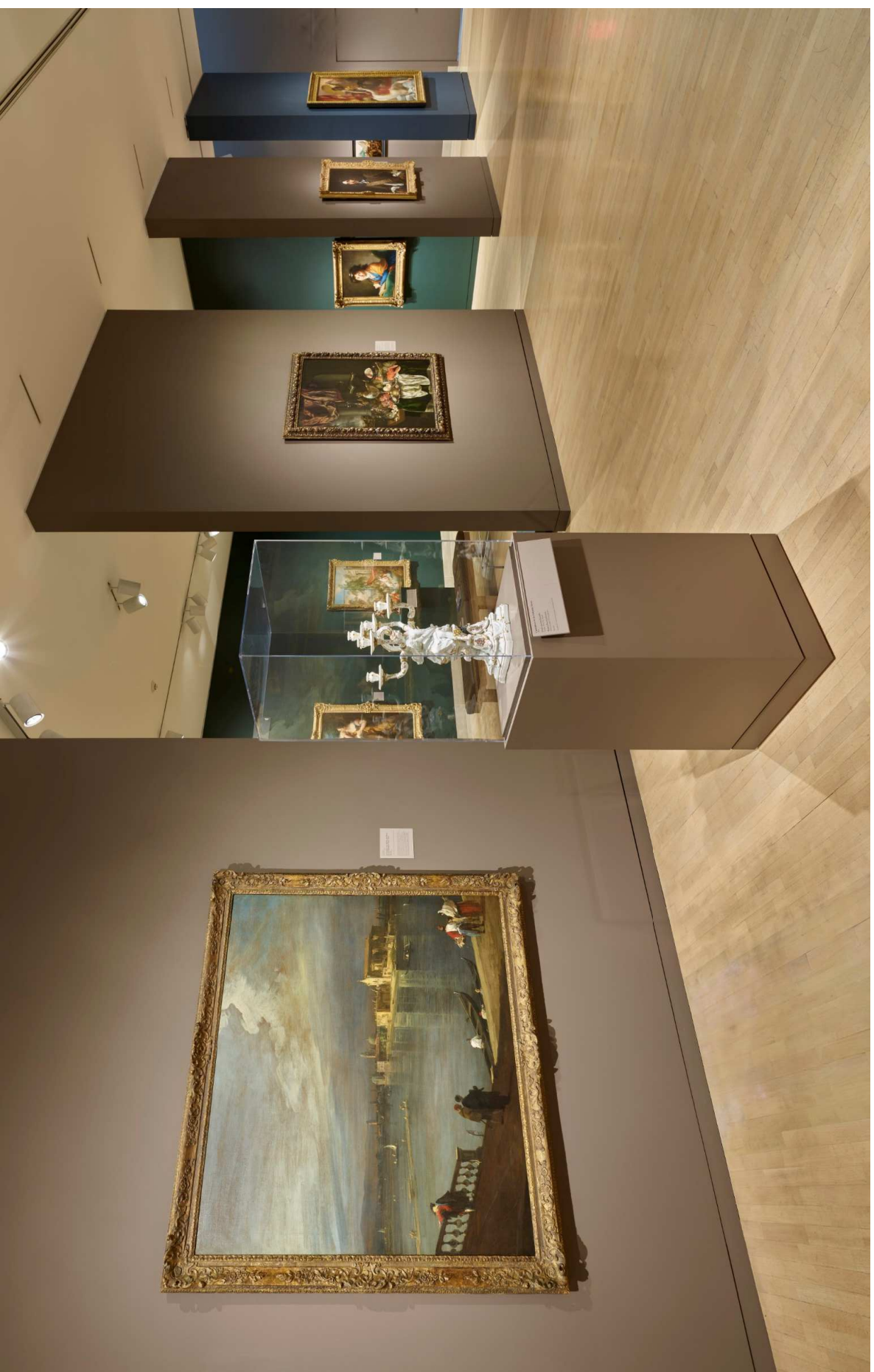
Robert Delaunay, French, 1885–1941  
*Portuguese Still Life*, 1916. Oil on canvas



Pierre Bonnard, French, 1867–1947  
*Young Woman at Her Toilette*, 1916. Oil on canvas









Gift of  
Michael L. Rosenberg









Small white label with text.



Small white label with text.



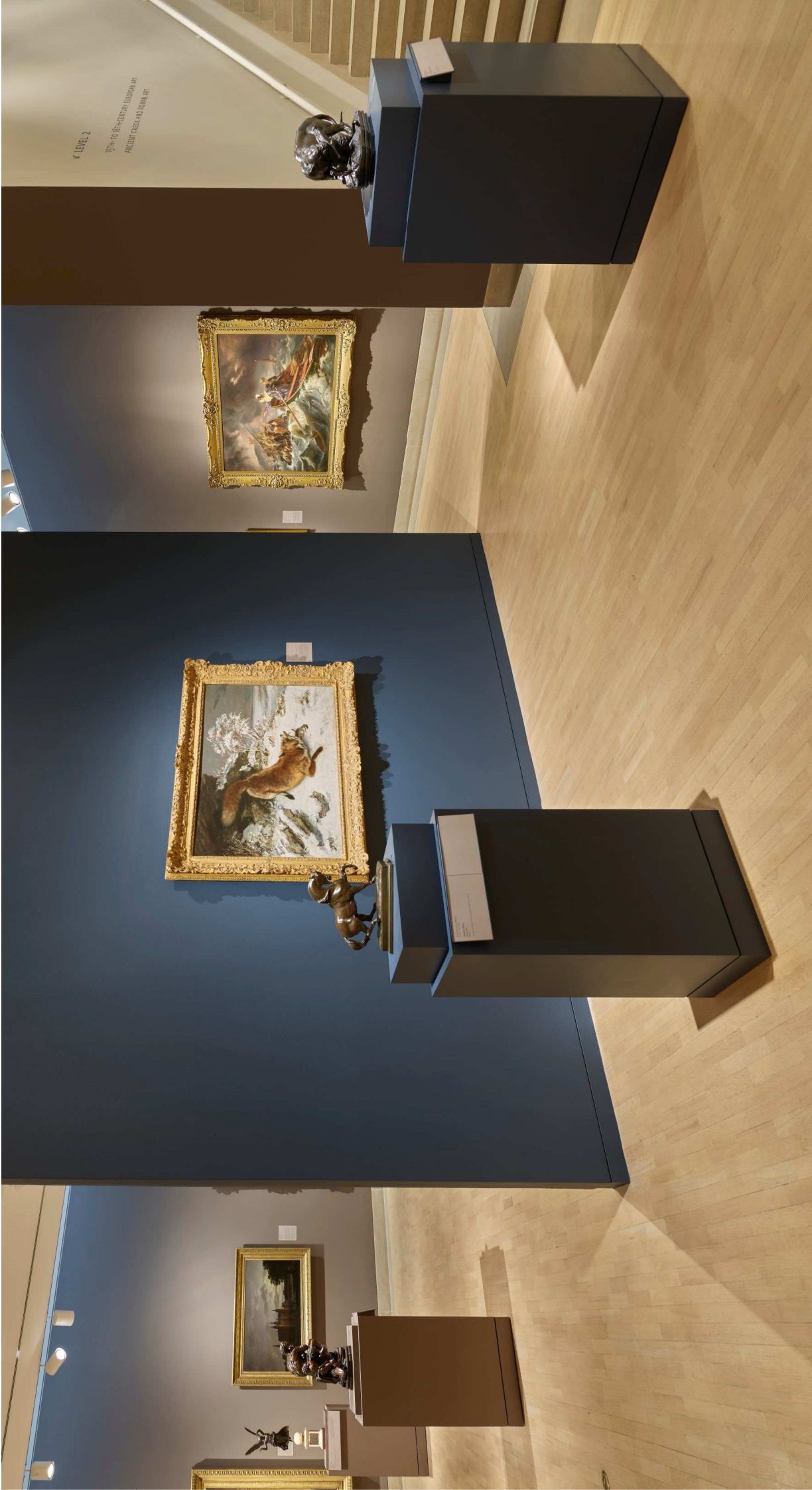
Small white label with text.



Small white label with text.

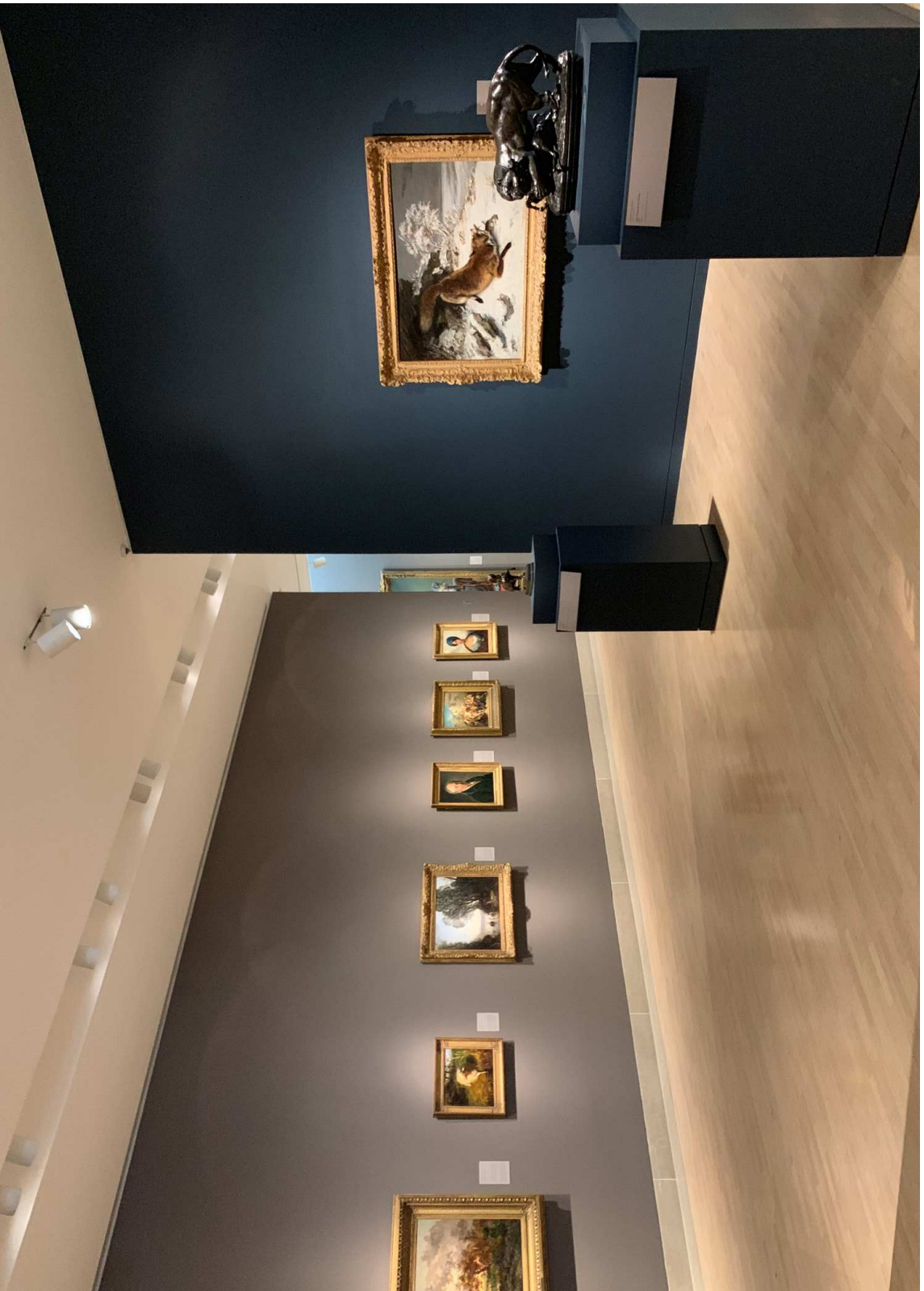


Small white label with text.



LEVEL 2

15TH-19TH-CENTURY EUROPEAN AND  
ANCIENT GREEK AND ROMAN ART







# European Art



1. The Meeting of the Friends of the Cross, by J.M.W. Turner, 1840. Oil on canvas, 100 x 125 cm. Tate Gallery, London.

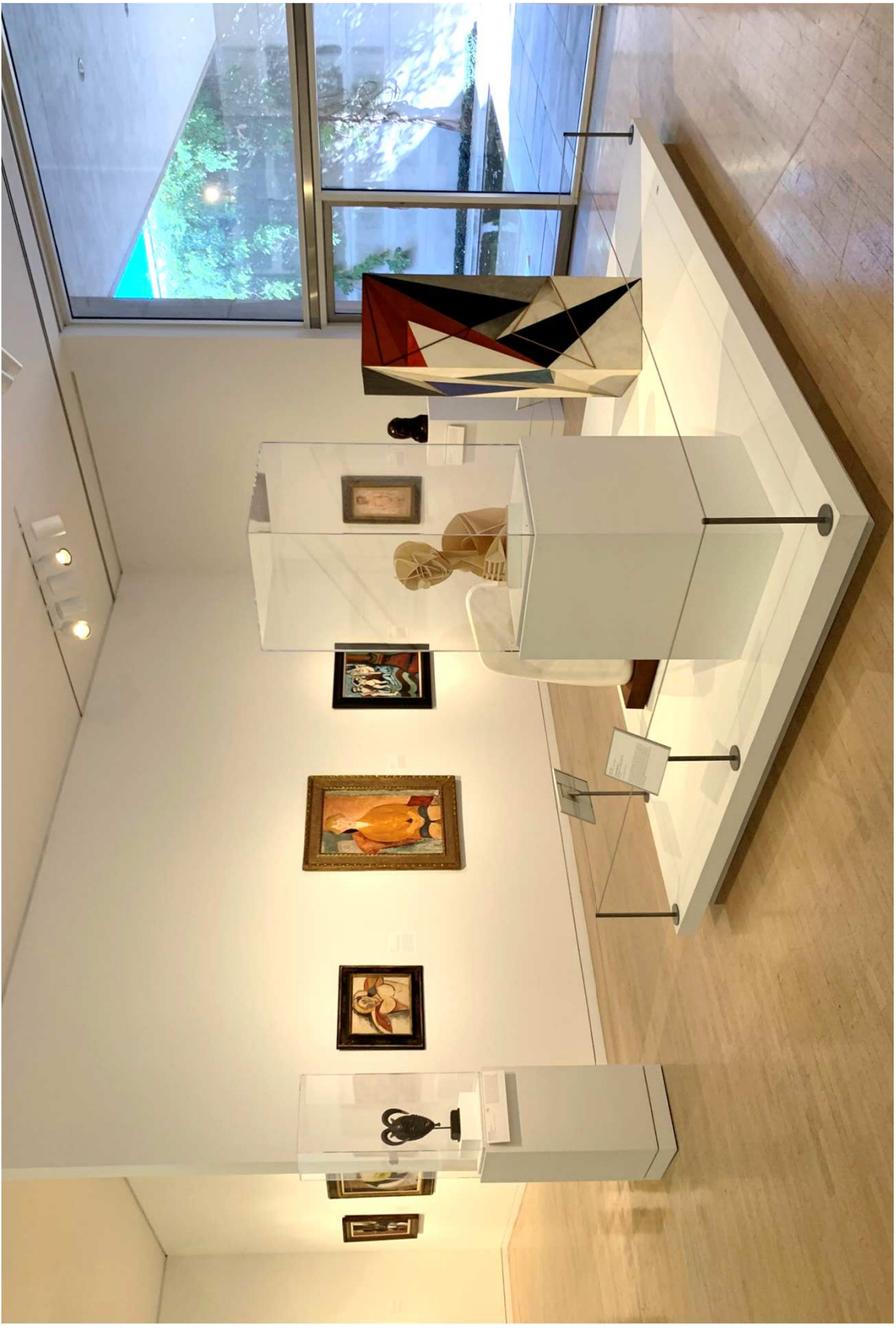


2. The Palace of the Popes, by J.M.W. Turner, 1845. Oil on canvas, 100 x 125 cm. Tate Gallery, London.



3. The Palace of the Popes, by J.M.W. Turner, 1845. Oil on canvas, 100 x 125 cm. Tate Gallery, London.







Nelson Gidley  
American, 1901-1977  
Composed Head No. 2  
1955  
Wood, stone, and metal  
This is a large-scale sculpture of a head, composed of many small, geometric pieces of wood, stone, and metal. The sculpture is made of light-colored wood or stone, featuring a central circular opening. It is displayed on a white pedestal. The sculpture is made of light-colored wood or stone, featuring a central circular opening. It is displayed on a white pedestal.



Yankee monks are used celebrants of the dances and serve as interpreters between the B'ak and human beings. They take the middle spirit's voice—created from the gods' words—and use it to help the people make their wishes. Each monk used to follow the fourth of the community and was entitled to the role of kin to the deity. The monks' role was to help the people understand the deity's words and to help them understand the deity's words. The monks' role was to help the people understand the deity's words and to help them understand the deity's words.

GM

*Je face mask*  
About 1930-1952  
About 1930-1952





In honor of  
James H. and Lillian Clark



1900  
The Artist's Studio  
by J.M.W. Turner



1844  
The Windmill  
by J.M.W. Turner







