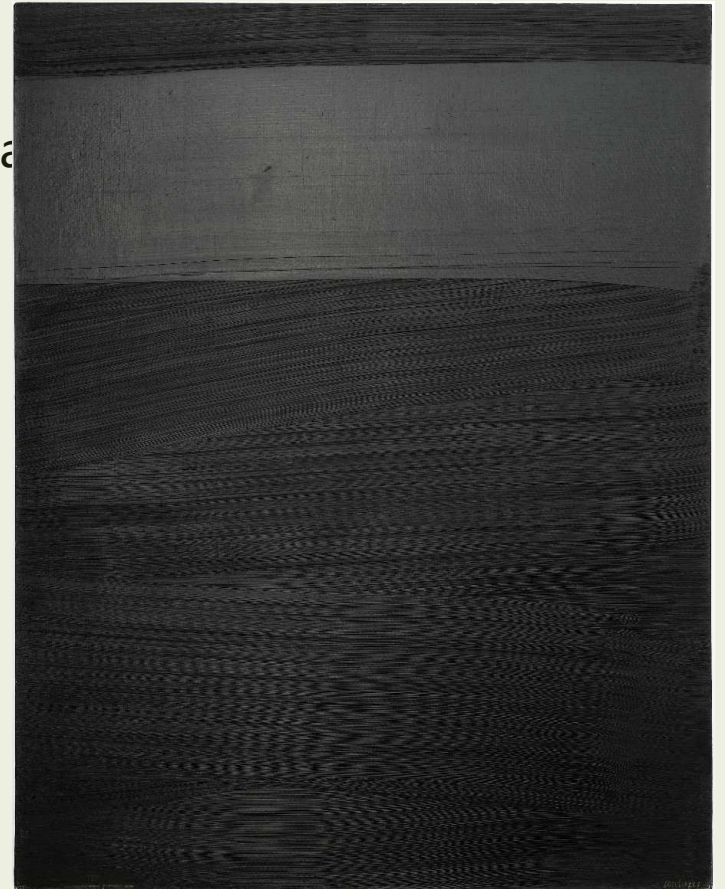




SOULAGES, A CENTURY MUSÉE FABRE, MONTPELLIER

The musée Fabre takes part to national and international celebrations of Pierre Soulages' centenary

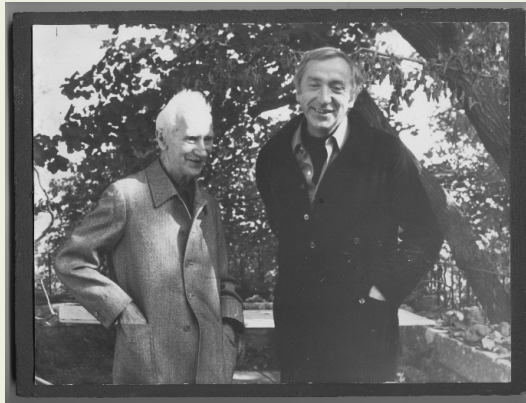
- Loan to the Musée du Louvre of the very first real *outrenoir* made in 1979 by the artist



A remarkable long-term loan at the musée Fabre



A very special relationship between Pierre Soulages and Montpellier



An enriched display and a abundant program of events

