



# FRAME

## French Regional American Museum Exchange

---

FRAME is a consortium of 26 museums in France and North America that promotes cultural exchange in the context of museum collaborations. FRAME fosters partnerships among its member museums to develop innovative exhibitions, educational and public programs, and professional exchanges among museum staff, and a bi-lingual website that reaches global audiences. [www.framemuseums.org](http://www.framemuseums.org)

# FRAME ANNUAL REPORT

*December 2011*

**FRAME has had a marvelous year, maintaining its traditions of developing innovative and collaborative projects, and launching new initiatives. In October 2011, FRAME held its 13th Annual meeting in Washington, D.C. and Richmond, Virginia.**

**Founder, Co-President, and Board Chair, Elizabeth Rohatyn** welcomed two new Board Members in 2011, **Davin A. Staats**, Treasurer, and **Constance Goodyear Baron**. They join FRAME Board Members: Mrs. Rohatyn, Marie-Christine Labourdette, Co-President, Princess Laure de Beauveau-Craon, Dr. Richard R. Brettell, Philippe de Montebello, Pierre Rosenberg, Baroness Philippine de Rothschild, Robert and Elisabeth Wilmers, and Gary C. Wolff.

The FRAME network expanded in 2011. We welcomed the **Musée des Beaux-Arts de Nantes** and the **Nelson-Atkins Museum of Art**, Kansas City in June. **The Montreal Museum of Fine Arts**, previously an Associate Member, was granted full membership status.



Photo by Jessica Frey

## BOARD MEETING ON OCTOBER 13 IN WASHINGTON, D.C.

*Davin Staats, Constance Goodyear Baron, Marie-Christine Labourdette, Elizabeth Rohatyn, Gary Wolff; and FRAME Directors and Ex-officio Board Members, Charlotte Eyerman and Pierre Provoyeur,*

## THE MOURNERS: TOMB SCULPTURES FROM THE COURT OF BURGUNDY CONTINUES ITS TRIUMPHANT TOUR

Nearly 400,000 visitors have seen this moving exhibition since it opened at the Metropolitan Museum of Art, New York in March 2010, continuing on to FRAME venues: Saint Louis Art Museum, Dallas Museum of Art, Minneapolis Institute of the Arts, Los Angeles County Museum, and the Fine Arts Museums of San Francisco. It is on view at the Palace of the Legion of Honor through December 31, 2011, then on to its final U.S. venue, the **Virginia Museum of Fine Arts** on January 21 through April 15, 2012. The exhibition will enjoy an extended European tour in Bruges, Belgium and Berlin, Germany, then closes in Spring 2013 at the Musée national du Moyen Âge (the Cluny) in Paris. This critically-acclaimed exhibition was also honored by the Association of Art Museum Curators in May 2011 as **"Outstanding Small Exhibition, 2010"** for its presentation in Dallas. The exhibition catalogue, authored by Musée des Beaux-Arts de Dijon director, **Sophie Jugie**, published by FRAME in conjunction with Yale University Press and Marquand, has been reprinted due to overwhelming success.



©Copyright FRAME, photos by Jared Bendis and François Jay



©Copyright FRAME, photos by Jared Bendis and François Jay  
+ cover photo detail

The exhibition is supported by a leadership gift from the **Iris and B. Gerald Cantor Foundation**. Additional support provided by the **Florence Gould Foundation**, the **Eugene McDermott Foundation**, **Constance Goodyear Baron**, and **Boucheron**. Major corporate support is provided by **Bank of the West**, Member BNP Paribas Group. This exhibition is supported by an indemnity from the Federal Council on the Arts and Humanities.



**Mourners** opening event, hosted by **Bank of the West**, at the Los Angeles County Museum of Art, May 4, 2011. **Michael Govan**, CEO and Wallis Annenberg Director, LACMA. **Yves Berteloot**, Deputy Mayor for Culture, Dijon; **Elizabeth Rohatyn**, Founder, Co-President, and Board Chair, FRAME; **Michael Shepherd**, Chairman and CEO, Bank of the West.

Courtesy of LACMA, photo by Howard Pasamanick

**FRAME 13TH ANNUAL MEETING: WASHINGTON, D.C. AND RICHMOND, VIRGINIA  
OCTOBER 13-16, 2011**



*FRAME 13th Annual Meeting participants in the Atrium of the beautiful new wing of the Virginia Museum of Fine Arts.*

Congratulations to **Alex Nyerges** and his exceptional staff, who were impeccable hosts.

**The generosity of the Florence Gould Foundation makes FRAME's Annual Meeting possible.**

FRAME delegates from all 26 member museums, FRAME Board Members, and the FRAME leadership in North America and France gathered to exchange ideas, advance current projects, and to discuss new initiatives. We focus on **innovative exhibitions, educational and public programs, and professional exchanges**. This year the annual meeting featured workshops with discussions in the museum's galleries.

**FRAME collaborations draw on the collective strengths of the members' collections.** In North American FRAME museums, the majority of collections are encyclopedic, featuring works of art across all cultures, media, and eras. In France, the collections are strongest in European art across all media, and some French FRAME museums likewise boast impressive collections of Modern and Contemporary art. All FRAME museums share the common bond of strong collections in European art.

**FRAME projects over the course of its history include a diverse array of exhibitions** focusing on European art, as well as American art from the 18th to the 20th centuries, the art of ancient Mexico, Modern and Contemporary art, including photography. New exhibition ideas reflect this diversity.

**Educational projects mobilize permanent collections to engage with all audiences.** Recent projects include the award-winning "Talking Art" project, pioneered by the Clark Institute of Art in Williams-town, Massachusetts and implemented in Marseille and Montpellier, France. Support from the **Annenberg Foundation** and the **U.S. Embassy Paris** made "Talking Art" possible. This FRAME program provides a model for engaging under-served audiences: in this case, youth in the criminal justice system. **The Annenberg Foundation** has been a long-term supporter of FRAME. In 2010 and 2011 it also supported the **Goltzius exchange** in Hartford and Strasbourg, reuniting a pair of paintings, *Adam and Eve* (1613) after a 100-year separation.

**FRAME encourages international cooperation and professional exchange**, with the Annual Meeting as the most prominent and long-standing example. FRAME, France has led an effort to secure travel grants for young professionals. **The U.S. Embassy in Paris** has provided grants for curator Audrey Gay-Mazuel, Musée des Beaux-Arts de Rouen and educator Virginie Dansault of the Musée des Beaux-Arts de Tours to travel in the US. FRAME, North America supports these efforts with practical and logistical support for our visiting French colleagues, and is committed to identifying professional exchange opportunities for French and North American museum professionals.

**FRAME MEMBER MUSEUMS**

**North America:**

Cleveland Museum of Art  
Clark Institute of Art, Williamstown, MA  
Dallas Museum of Art  
Denver Art Museum  
Fine Art Museums of San Francisco  
Los Angeles County Museum of Art  
Minneapolis Institute of Arts  
Montreal Museum of Fine Arts  
Nelson-Atkins Museum of Art, Kansas City, MO  
Portland Art Museum, Portland Oregon  
Saint Louis Art Museum  
Virginia Museum of Fine Arts, Richmond  
Wadsworth Atheneum Museum of Art, Hartford, CT

**France:**

Musée des Beaux-Arts de Bordeaux  
Musée des Beaux-Arts de Dijon  
Musée des Beaux-Arts de Grenoble  
Musée des Beaux-Arts de Lille  
Musée des Beaux-Arts de Lyon  
Musées de la ville de Marseille  
Musée Fabre, Montpellier  
Musée des Beaux-Arts de Nantes  
Musées de la ville de Strasbourg  
Musée des Beaux-Arts de Rennes  
Musées de la ville de Rouen  
Musée des Augustins, Toulouse  
Musée des Beaux-Arts de Tours

One highlight, among many, of the Annual Meeting: **President William Jefferson Clinton** sent this letter on the occasion of the reception hosted by **Ambassador of France to the United States**, his Excellency François Delattre and his wife, Sophie, in honor of **Felix Rohatyn**, Ambassador of the United States to France, 1997-2000, and his wife **Elizabeth Rohatyn**, who was inspired to launch FRAME in 1999 as an expression of cultural diplomacy and Franco-American friendship.



WILLIAM JEFFERSON CLINTON

October 13, 2011

His Excellency François Delattre  
Ambassador of France to the United States  
Embassy of France in Washington  
4101 Reservoir Road, N.W.  
Washington, D.C. 20007

Dear Ambassador Delattre:

I am delighted that you are honoring my friends Felix and Elizabeth Rohatyn this evening, and I join everyone gathered at the French Embassy to congratulate them for all they've done to promote cultural and artistic exchanges between France and North America.

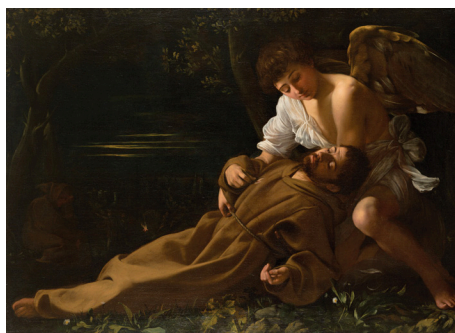
Felix was a gifted ambassador to France during my administration, and one of the many wonderful results of his tenure was Elizabeth's leadership in forming the French Regional and American Museum Exchange—a vibrant alliance of directors, curators, and educators from twenty-six art museums. Thirteen years later, FRAME's exhibitions, education projects, and exchange programs have touched millions of people on both sides of the Atlantic.

Congratulations to Felix, Elizabeth, and FRAME, and best wishes to you and all of your guests for a wonderful celebration.

Sincerely,

A handwritten signature in blue ink that reads "Bill Clinton" with a stylized flourish at the end.





Michelangelo Merisi da Caravaggio  
Italian, Roman school, 1571-1610

**Saint Francis of Assisi in Ecstasy,**  
c. 1594

Oil on canvas

36 3/8 x 50 1/4 in.

Wadsworth Atheneum Museum of Art, Hartford, CT

The Ella Gallup Sumner and Mary Catlin Sumner Collection Fund,  
1943.222

Following the resounding success of *The Mourners*, FRAME is delighted to announce its **next major exhibition** on the subject of **Caravaggio and Caravaggism** in 17th-century Europe. This collaboration among four organizing FRAME museums, with many loans and significant professional expertise drawn from the FRAME network, launches in 2012.

## EXHIBITION TOUR

### ***Corps et ombres. Caravage et la peinture caravagesque en Europe***

Musée Fabre, Montpellier and  
Musée des Augustins, Toulouse:

June 23 – October 14, 2012

### ***Caravaggio and His European Followers***

Los Angeles County Museum of Art:

November 11, 2012 – February 10, 2013

Wadsworth Atheneum, Hartford:

March 8-June 16, 2013

## EXTRAORDINARY FRANCE TRIP: JUNE 18-23, 2012

FRAME is pleased to announce an exciting **travel opportunity** to France for supporters and enthusiasts. Expertly coordinated by the professionals at Patron Travel, among many highlights, the trip offers exclusive access to the opening of the Caravaggio & Caravaggism exhibition in France, *Corps et Ombres (Bodies and Shadows)*, in Toulouse and Montpellier, June 20 and 22. The trip commences with an elegant evening in **Paris**, a visit to the newly redesigned **Musée d'Orsay**, a day trip **Rouen**, dinner at **Château du Champ de Bataille**, and a journey to the splendid south for the openings at the **Musée des Augustins in Toulouse** and the **Musée Fabre in Montpellier**, with day trips to Carcassonne and Nîmes.

### **DATES: June 18-23, 2012**

Trip total: \$7,000 includes all accommodations, meals, transport during the tour and a \$1500 tax-deductible contribution to FRAME. Airfare not included; solo traveler supplement. \$3500 due at Registration. Final payment due March 18, 2012.

**For more information and to reserve on the Early Priority List, please contact**

**travel@framemuseums.org or call 781.641.2679. Register now to reserve for this special FRAME trip.**



Georges de la Tour,  
**The Magdalen with the Smoking Flame,**  
circa 1638-1640

Oil on canvas

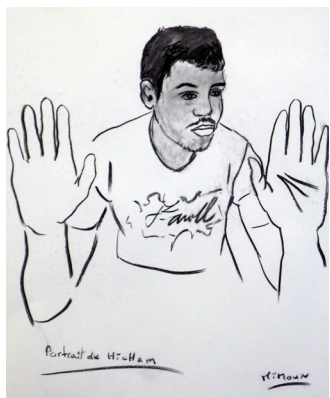
46 1/16 x 36 1/8 in. (117 x 91.76 cm)

Los Angeles County Museum of Art,

Gift of The Ahmanson Foundation (M.77.73)

Photo © 2011 Museum Associates/LACMA

## CONNECTING ACROSS CULTURES & PROMOTING UNDERSTANDING



*"Portrait de Hicham," produced by a youth participant in "Talking Art" in Marseille. This FRAME project promoted social engagement and the transformative power of art.*



**FRAME is committed to EDUCATION and PUBLIC PROGRAMS** that serve local, national, and international audiences. FRAME projects in local FRAME communities reach a broad array of audiences of all ages and backgrounds. Projects include "Talking Art," "Art and Music," an Education "Trunk" that accompanies *The Mourners* on tour and is available online, and virtual presentations on Marcel Duchamp's "Boîte en valise," French Oil Sketches, and interactive games.

The bi-lingual FRAME website is a primary tool for its educational initiatives as well as a full presentation of FRAME's exhibitions, publications, press and objectives.

**A new, re-designed website launches in December 2011**, featuring greater ease of navigation, live links to all member museums for timely and up-to-date information, and optimal efficiency for the FRAME team and its resources. The site will remain bi-lingual and will continue to feature the astonishing 3-D images of *The Mourners* on [www.mourners.org](http://www.mourners.org), a project that was supported through the generosity of the **Samuel H. Kress Foundation**.

## MORE 2011 NEWS



A year ago, FRAME established its first **internship program**, to advance its mission as an educational organization. The inaugural interns are Marie Belin, Elizabeth Tunick, and Katy Hover-Smoot (graduate interns) and Alexander Phillips and Melissa Liu (undergraduate interns). They worked directly with the FRAME offices Los Angeles and Dallas, and remotely with FRAME colleagues Emilie Vanhaesebroucke and Lucy Buchanan, as well as Advisors for Education/Public Programs: Susan Jacobsen and Ronna Tulgan-Ostheimer in North America; and with FRAME's Communications Advisor, Jennifer Stoffel, Director of External Affairs at the Saint Louis Art Museum. They made great contributions, particularly to our new website and communications efforts, and in turn received training and mentoring.

In April, **Sotheby's**, New York hosted an elegant party in honor of **Elizabeth Rohatyn** and FRAME. We welcomed many Board members and FRAME supporters.

The **Executive Committee and Board of Trustees met in Giverny**, France in May to discuss Strategic Planning, including new initiatives in France for fundraising, and guiding principles for our organization. We identified priorities for the future, administratively and programmatically, and pursued these discussions at the Annual Meeting in October. Following the Giverny meeting, generously hosted by the **Terra Foundation**, FRAME educators gathered in Dijon. FRAME, France convened an Education meeting December 1-2 in **Rennes**, a final FRAME activity for dear colleague **Francis Ribemont**, who shall retire as director there in 2012. Next Spring, FRAME colleagues will meet in Giverny to discuss **new projects and collaborations**.

In 2011, FRAME bid a fond adieu to Bill Barrett, Treasurer Emeritus, and to Pierrette Lacour, who retired as Coordinator, FRAME, North America. Bill and Pierrette joined us at the Annual Meeting in October. FRAME welcomed new colleagues from Nantes and Kansas City to our consortium, and we congratulate our colleague from Montpellier, **Sylvain Amic**, on his appointment as **Director of the Musées de la Ville de Rouen**. We honor the memory of FRAME colleagues who passed away in 2011, Co-President Emerita Françoise Cachin, and Director Emeritus of FRAME, France, Jacques Villain, whom shall be remembered fondly and with gratitude. **As 2012 approaches, we look forward to another vibrant year for FRAME.**

**FRAME IS GRATEFUL FOR THE SUPPORT OF ITS DONORS,  
VOLUNTEERS, AND MEMBER MUSEUMS.**

FRAME, North America, 4470 West Sunset Boulevard, #706, Los Angeles, CA 90027  
[info@framemuseums.org](mailto:info@framemuseums.org)