

# FRAME

## French Regional American Museum Exchange

**FRAME** is a consortium of 26 major museums in France and North America that promotes cultural exchange in the context of museum collaborations. FRAME fosters partnerships among its member museums to develop innovative, high-quality exhibitions, educational and public programs, and professional exchanges among museum staff, and a bilingual website to reach global audiences: [www.frame museums.org](http://www.frame museums.org)

# FRAME by the Numbers

## 350,000+

Visitors to *Caravaggio & His Legacy* exhibition since June at **FRAME** museums in Toulouse, Montpellier, and Los Angeles.

## \$150,000

Amount of **FRAME** fundraising for *Caravaggio & His Legacy* (US) from foundation grants, as well as corporate and individual contributions.

## 550 and growing!

LIKES on Facebook since launch in December 2011 (features news, events and pictures from **FRAME**). Over 450+ new LIKES since June.

## 76.25

Percentage of new visitors to website. Social media presence was also bolstered by Facebook, joining Art.sy, regular e-Newsletters.

## 14,000

Visits to framemuseums.org since the new elegant, efficient, redesigned site debuted a year ago. Visit for a complete list of **FRAME** museums and links to their websites.

## 10

Supporters on first **FRAME** patron trip to France, June 2012 (plans for 2013 travel opportunities underway).

## 4

Educational internships granted to undergraduate and postgraduate students since **FRAME** launched the program in 2011.

## 75

Spectators who cheered on contemporary art worlders at **FRAME**'s tennis invitational/benefit for the Caravaggio exhibition December 1 in L.A. (also the number of attendees at 2012 Annual Meeting in Toulouse and Montpellier, France this past September).

## 500,000+

Visitors who experienced *The Mourners* during its seven-city U.S. tour (March 2010-April 2012.) These masterpieces from Dijon are presently touring in Europe and shall return home in Summer 2013.

## \$250,000

Terra Foundation Exhibition Grant to **FRAME** on behalf of *Joseph Cornell and Surrealism*, co-organized by Musée des Beaux-arts de Lyon and Fralin Museum of Art, University of Virginia (opens Fall 2013 in Lyon; 2014 in US).

## 2,500,000

Visitors to eighteen **FRAME** exhibitions in over 40 cities internationally since 1999 (archive and list of publications available at framemuseums.org).

## 26

Major museums belonging to the **FRAME** consortium, collaborating on innovative, substantive programs of the highest quality in exhibitions, education, and professional exchange.

COVER: Michelangelo Merisi da Caravaggio, *Saint John the Baptist in the Wilderness*, 1604-1605, Oil on canvas, 68 x 52 in. (172.7 x 132.1 cm); Frame: 77 1/4 x 60 7/8 x 4 in. The Nelson-Atkins Museum of Art, Kansas City, William Rockhill Nelson Trust.

Photo courtesy of the Nelson-Atkins Museum of Art by Jamison Miller

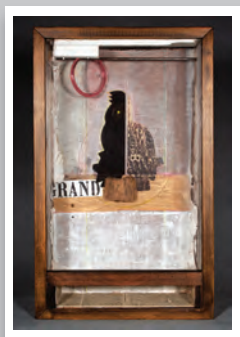
# FRAME 14th Annual Meeting

**September 26-30, 2012, Toulouse and Montpellier, France**

*The Annual Meeting is made possible by generous support from the Florence Gould Foundation*

Our major event to promote and advance professional exchange and collaboration is held alternately in France & North America. This past Fall, hosted by the Musée des Augustins, Toulouse and the Musée Fabre, Montpellier Agglomération, **FRAME** convened 75 attendees: directors, curators, educators; museum professionals in administration, development, exhibitions; Trustees and special guests. **The 15th Annual Meeting** will be hosted by the Montreal Museum of Fine Arts, November 6-10th, 2013.

## Exhibitions Presented for 2013-2015



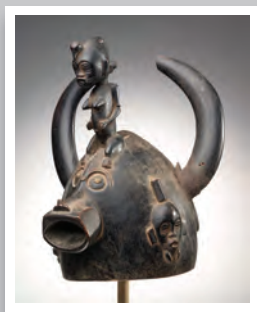
**Joseph Cornell & Surrealism:** Major exhibition on the pioneering and influential American modernist co-organized by Sylvie Ramond, Director & Chief Curator, Musée des Beaux-arts de Lyon and Matthew Affron, Curator, the Fralin Museum of Art, at the University of Virginia. Exhibition, catalogue, and symposia will be supported in part by a grant from the Terra Foundation for American Art. Opens Fall 2013.

**Joseph Cornell**, American, 1903-1972, *Untitled (Black Cockatoo Silhouette)*, c. 1954-65, Mixed media (box construction), 19 5/8 x 12 x 4 3/8 in., Gift of the Joseph and Robert Cornell Memorial Foundation, 2002.15.3

Courtesy of The Fralin Museum of Art at the University of Virginia. Art © The Joseph and Robert Cornell Memorial Foundation/Licensed by VAGA, New York, NY. [www.vagartights.com](http://www.vagartights.com)

**Senufo: History of a West African Style:** Organized by Cleveland Museum of Art Curator of African Art, Constantine Petridis. New discoveries and scholarship will be featured in the exhibition and accompanying catalogue, edited by Dr. Petridis, co-authored with Professor Susan Elizabeth Gagliardi, City College of New York.

**Helmet (dagu).** Senufo peoples, Côte d'Ivoire. Wood; H. 34.9 cm. The Cleveland Museum of Art, Gift of Katherine C. White, 1975.152. Photo: © Cleveland Museum of Art.



**Working Among Flowers: French Still Life in the 19th Century,** co-organized by Virginia Museum of Fine Arts and Dallas Museum of Art; Mitchell Merling and Heather MacDonald.

**Abstractions in France & the United States, 1945 to 1970,** co-organized by Musée d'Art moderne et contemporain, Strasbourg and Musée des Beaux-Arts de Nantes; Joëlle Pijaudier-Cabot, Héloïse Conésá, Blandine Chavanne, Claire Lebosse.

**Benjamin-Constant & Orientalism,** co-organized by Musée des Augustins and Montreal Museum of Fine Arts; Axel Hémerly, Nathalie Bondil.

**François-André Vincent,** co-organized by Musée des Beaux-Arts de Tours and Musée Fabre; Sophie Join-Lambert, Michel Hilaire.

**18th-Century French Drawings,** Musée des Beaux-Arts de Rouen, Diederik Bakhuys.

**Also in development:** *Arts of the French, English, & American Table* (based on a 2011 proposal by former Rouen colleague Audrey Gay-Mazuel, Musée des Arts décoratifs, Paris; Pierre Provoyeur, FRAME, France); *Apostles of the Master of Rieux* (Toulouse, Charlotte Riou).



# More Annual Meeting Highlights



Delegation in Toulouse at Musée des Augustins.

Photo: Ville de Toulouse, P. Nin

## Education: Core to Our Mission

Pioneered by the Clark Art Institute in 2006, which generously shared its model with **FRAME**, *Talking Art* is one of our most important & successful educational programs. Implemented in Williamstown (honored with numerous awards), Montpellier, Marseille, and Strasbourg, it has been supported in part by **FRAME**, the Annenberg Foundation/GRoW Annenberg, & the U.S. Embassy in Paris (France only). **FRAME** Education advisors S. Jacobsen (Minneapolis), S. Mouton (Dijon), M. Pfenninger (Strasbourg) presented numerous **FRAME** educational initiatives. Educator J.-A. Santiago, shared images and data from the successful implementation of the program in Marseille. Plans are underway to expand *Talking Art* in 2013. **FRAME**, France convened French educators for a meeting in December 2012 in Rouen. Education advisor for **FRAME**, N. America, R. Tulgan-Ostheimer (Williamstown) presented on *Talking Art* and other initiatives.



Delegation in Montpellier at Musée Fabre.



Alex Nyerges, Director, VMFA & FRAME Executive Committee; Pierre Provoyeur, Director, FRAME, France; Marie-Christine Labourdette, Co-President, FRAME & Director, Service des Musées de France.



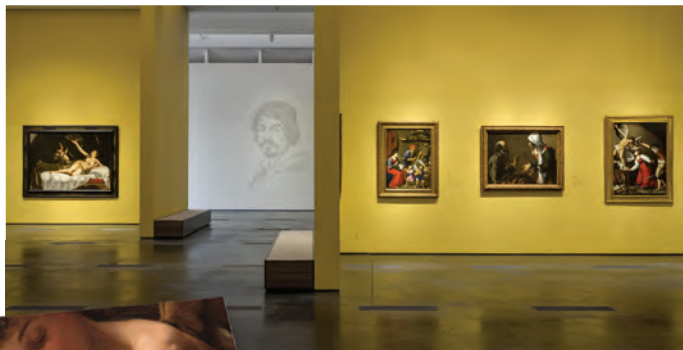
Youth enrolled in *Talking Art* in Marseille made this painting, *Family Reunion* (2012) inspired by Caravaggio's *Calling of St. Matthew* (San Luigi dei Francesi, Rome, 1599-1600).



Attendees learned about new FRAME projects, as well as projects by colleagues that engage the network, such as *Delacroix and Modernity* (Minneapolis, 2013), *Splendors of Venice* (Montreal & Portland, 2013-2014), and *18th-century French Paintings in America* (National Gallery of Art), curated by Pierre Rosenberg, FRAME Trustee and Director Emeritus of the Louvre and NGA curator; Yuriko Jackall who traveled to Montpellier to present the exhibition.

# FRAME in Pictures

Photo ©2012 Museum Associates/LACMA



The English-language exhibition catalogue, published by Los Angeles County Museum of Art, 2012. Edited by LACMA chief curator of European art and exhibition co-organizer, J Patrice Marandel, with contributions from **FRAME** curators and other scholars.



New **FRAME** website launched December 2011, as did the **FRAME** Facebook page; complete list of member museums with links to their sites, exhibitions, educational programs, and news.

©2012 Patrice McMillan. Ca. photo by David Crotty



Winners' Circle: **FRAME**'s Caravaggio-inspired Tennis Invitational & Benefit, Los Angeles, 12/1, featuring artists, curators, critics, and gallerists. In celebration/support of the exhibition (... because Caravaggio played tennis): a doubles

tournament. Gold medalists: gallerist, Gerard O'Brien and artist, Friedrich Kunath; Director, **FRAME**, N.America, Charlotte Eyerman; Silver medalists: LACMA curator of contemporary art, Franklin Sirmans and artist/professor, Charles Gaines.

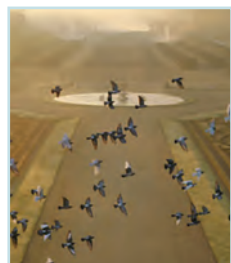
**For more photos and information about FRAME events, visit our Facebook page**

Installation views, *Bodies and Shadows: Caravaggio and His Legacy*, November 11, 2012-February 10, 2013, Los Angeles County Museum of Art. 60% of loans from **FRAME** museums; an unprecedented eight Caravaggio paintings in California; next venue: Wadsworth Atheneum in March, 2013.



**FRAME** Founder, Board Chair, & Co-President Elizabeth Rohatyn presided at Giverny meeting of **FRAME** leadership, Executive Committee, and colleagues working on projects, May 2012; generously hosted by the Terra Foundation for American Art.

Photo: Susan Jacobsen (MIA)



An elegant and exclusive evening at the Château du Champ de Bataille, inaugural **FRAME** trip, June 2012, co-organized with the experts at:



Photo courtesy Château du Champ de Bataille



## Thanks Our Supporters, Members, Partners, Board Members, and Volunteers

### THE MOURNERS 2010-2012

*Iris & B. Gerald Cantor  
Foundation*

Eugene McDermott Foundation

Felix and Elizabeth Rohatyn  
Foundation

**BANK OF THE WEST**   
BNP PARIBAS GROUP

**Sotheby's**

Constance Goodyear Baron

**KRESS**

Additional support from  
Boucheron & LVMH

### CARAVAGGIO & HIS LEGACY 2012-2013

**Sotheby's**

*ANNENBERG FOUNDATION*  
GRoW Annenberg



**KRESS**

Constance Goodyear Baron



A new venture of FRAME, France  
in 2012, FRAME Développement  
secured additional support for the  
French venues from corporate  
and individual contributors

## TERRA FOUNDATION FOR AMERICAN ART

**FRAME** is grateful to the **Terra Foundation for Exhibition & International Curatorial Travel Grants** to support *Joseph Cornell and Surrealism* (2012 and 2013) & for in-kind support: Spring Giverny Meeting (2012, 2013), as well as for its long-standing, generous support of **FRAME** projects & professional exchanges for over 10 years.

For vital operating support for this 501(c)3 non-profit organization, **FRAME** is grateful to our institutional members and our many supporters: in particular, the **Felix and Elizabeth Rohatyn Foundation** for its extraordinary support, as well as **Mr. & Mrs. Gary Wolff**. For a complete list of the **FRAME** Honor Roll of Donors—Foundations, Corporations, and Individuals, to make a contribution and to learn more, visit [framemuseums.org](http://framemuseums.org) or contact us at [info@framemuseums.org](mailto:info@framemuseums.org)

**FRAME Board of Trustees:** Elizabeth Rohatyn, Chair; Davin Staats, Treasurer; Charlotte Eyerman, Secretary (non-voting); Laure de Beauvau-Craon, Constance Goodyear Baron, Richard Brettell (Emeritus as of March 2012), Marie-Christine Labourdette, Philippe de Montebello, Pierre Provoyeur (non-voting), Pierre Rosenberg, Philippine de Rothschild, Elisabeth & Robert Wilmers, Gary Wolff.

## Best wishes for a happy, prosperous, and productive New Year

**FRAME, 4470 West Sunset Boulevard, #706, Los Angeles, CA 90027**  
[info@framemuseums.org](mailto:info@framemuseums.org)